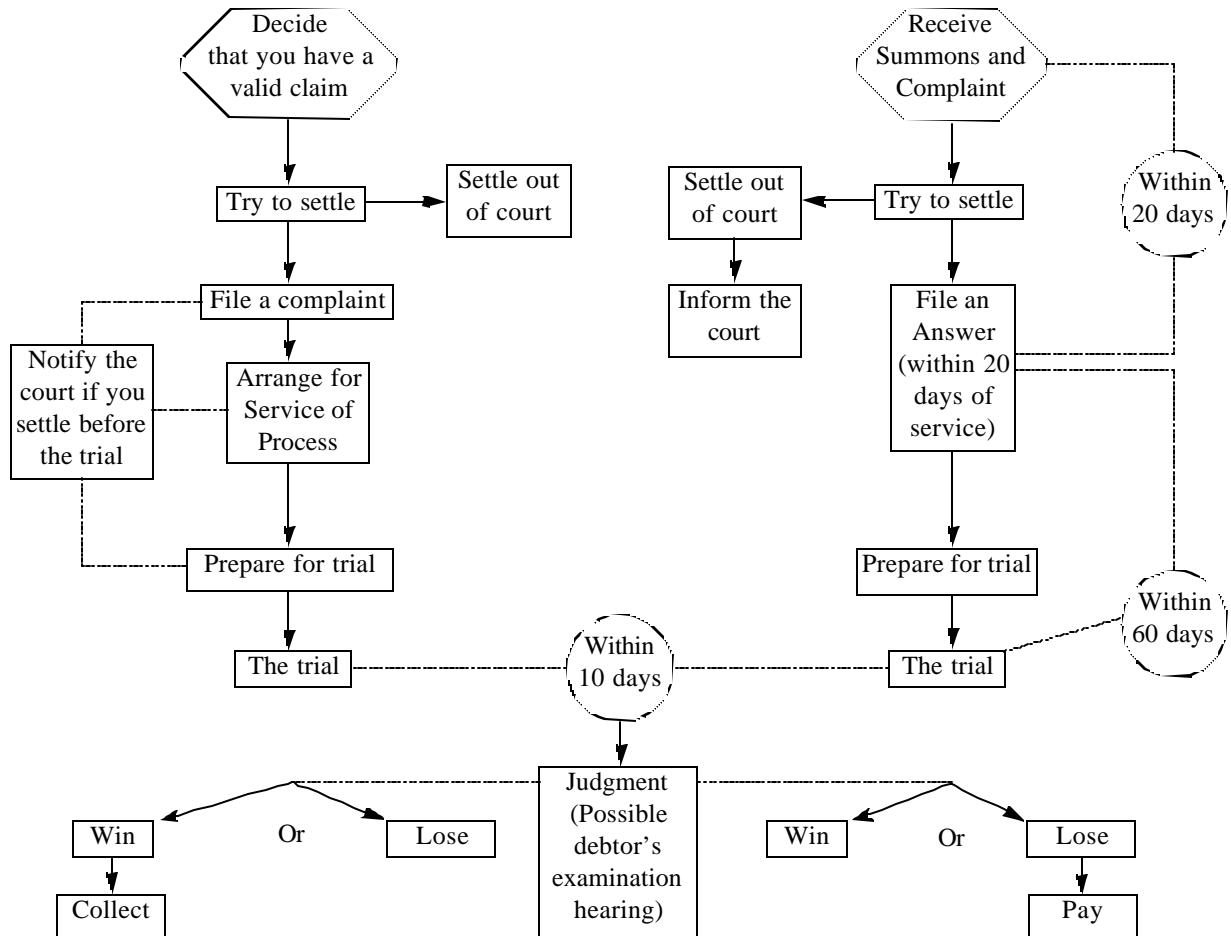


If You Are the Plaintiff...

If You Are the Defendant...



Arizona Supreme Court
 Administrative Office of the Courts
 1501 W. Washington, Phoenix, AZ 85007-3231
 This publication may be made available in an alternative
 format to assist persons with disabilities.
 Call (602) 542-9300 for additional copies.
 TDD (602) 542-9545
 ©2002
 All rights reserved.